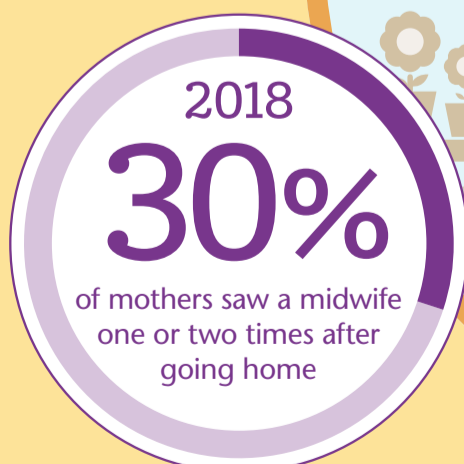
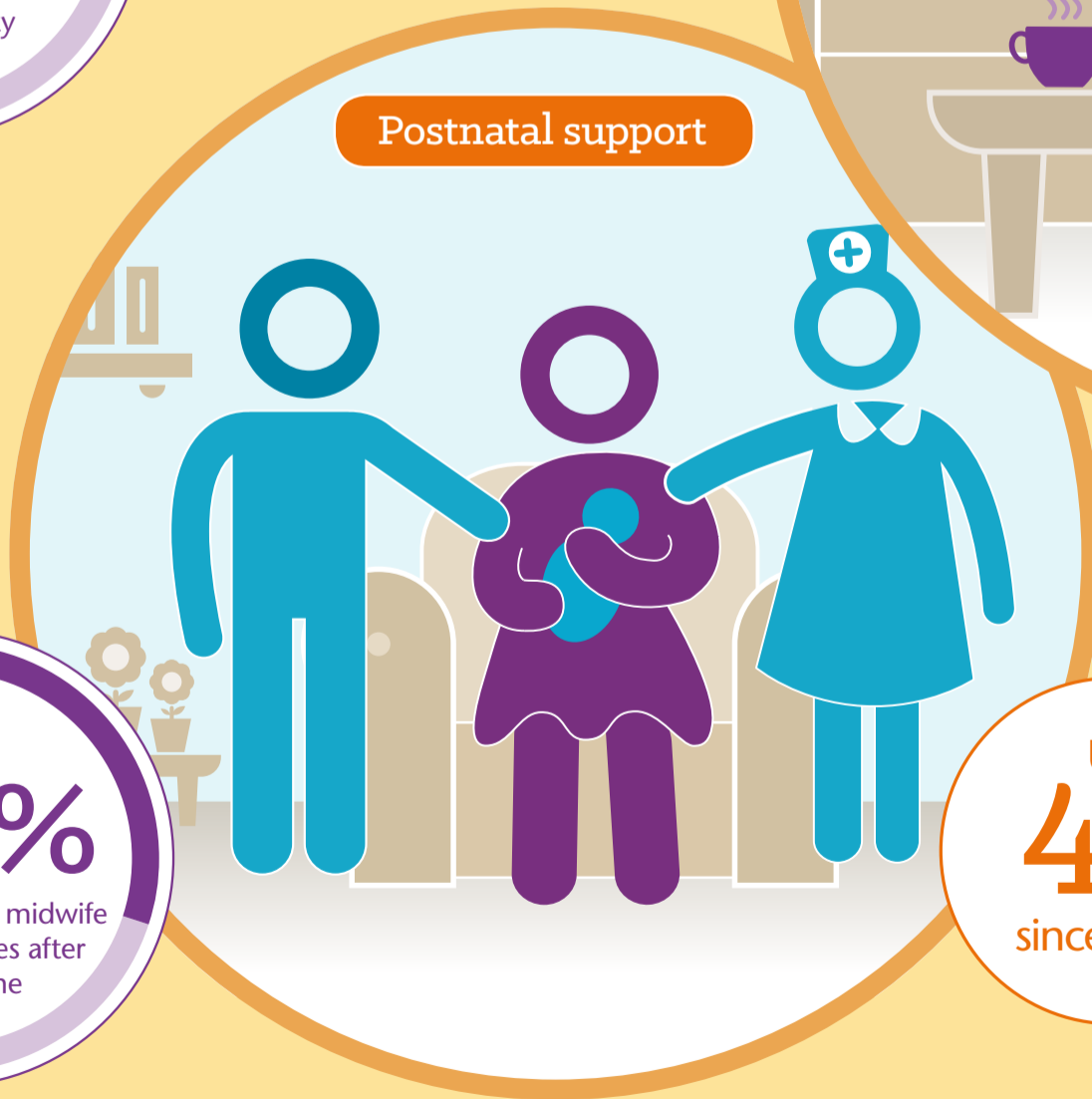
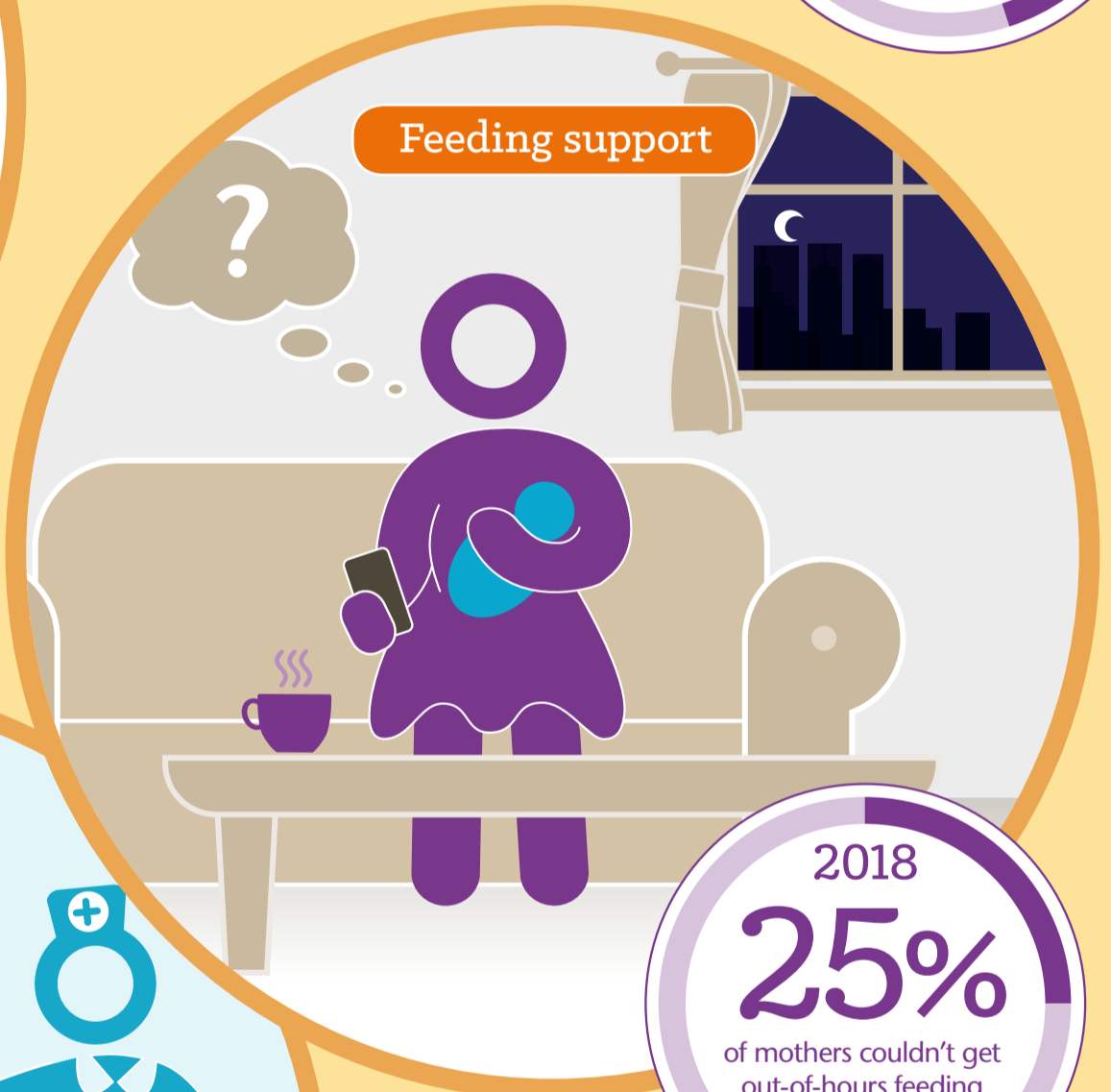
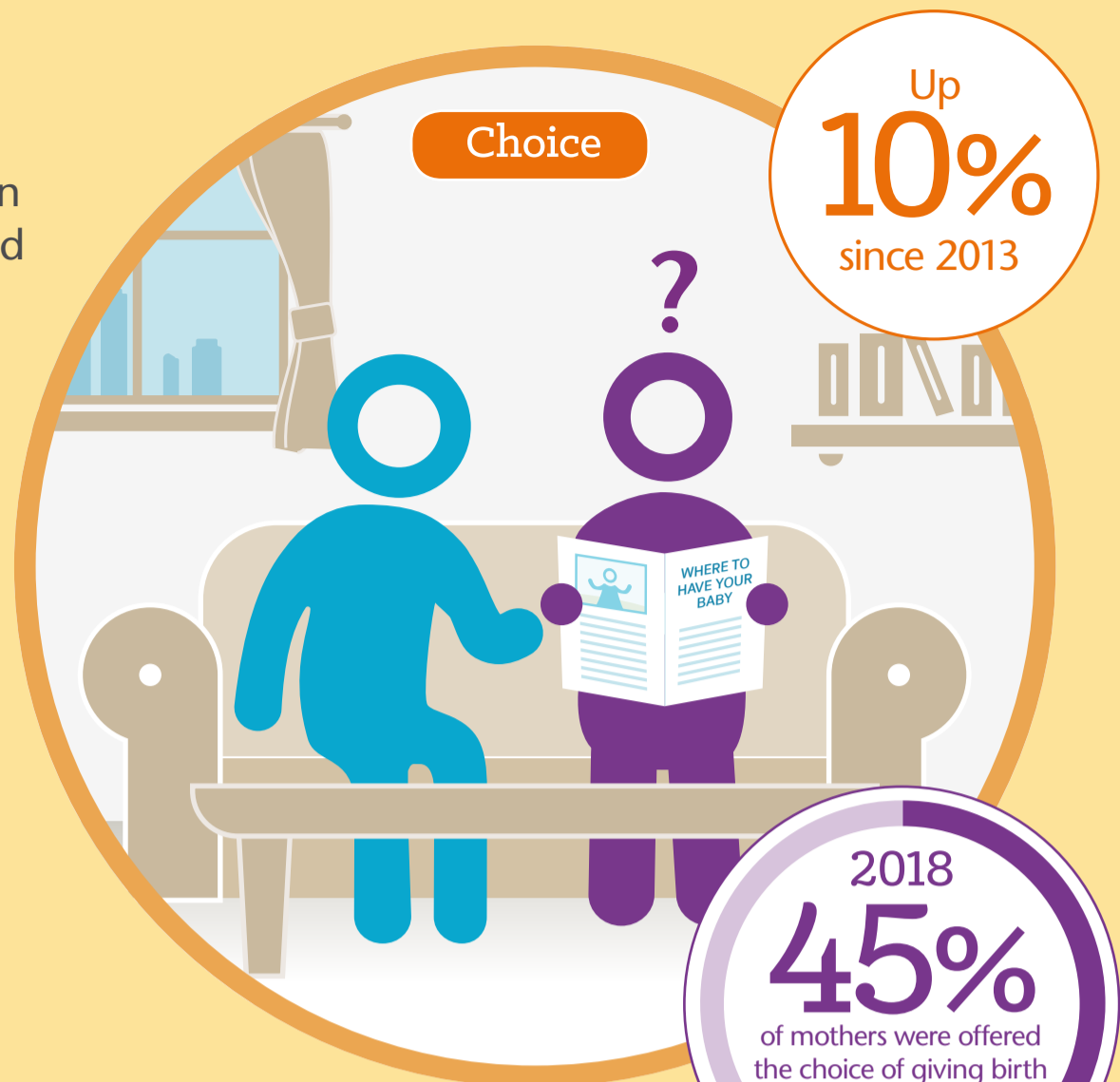


Maternity Survey 2018

The NHS Maternity Survey is the biggest source of data on people's experience of NHS maternity care in England, and in 2018 more than 17,500 women responded. The results show disappointing progress in many areas that are important to mothers, particularly continuity of care, feeding support and postnatal support. While there were some improvements, such as being offered a choice of where to give birth, the results show that consideration is needed to improve the experiences of mothers along the maternity pathway.



The **highest quality** person centred care for all, **always**.

This survey was designed and coordinated by Picker for the Care Quality Commission: <https://www.cqc.org.uk/publications/surveys/maternity-services-survey-2018>

