

Community Mental Health Survey 2019

12,551 people responded to this year's survey making it the single biggest source of data on people's experiences of community mental health services in England.

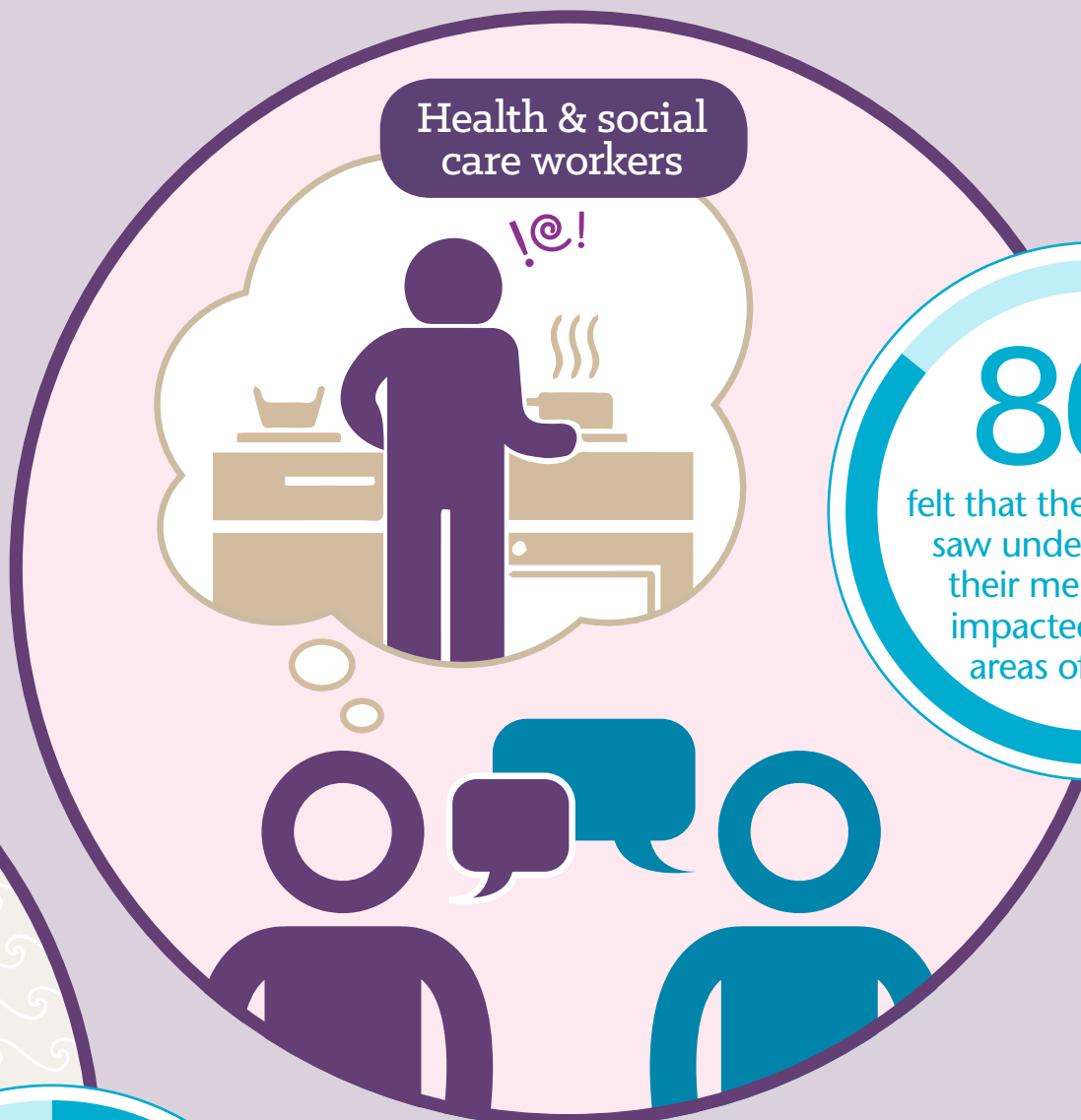
Support



77%

said that family members or others close to them had been involved as much as they would like

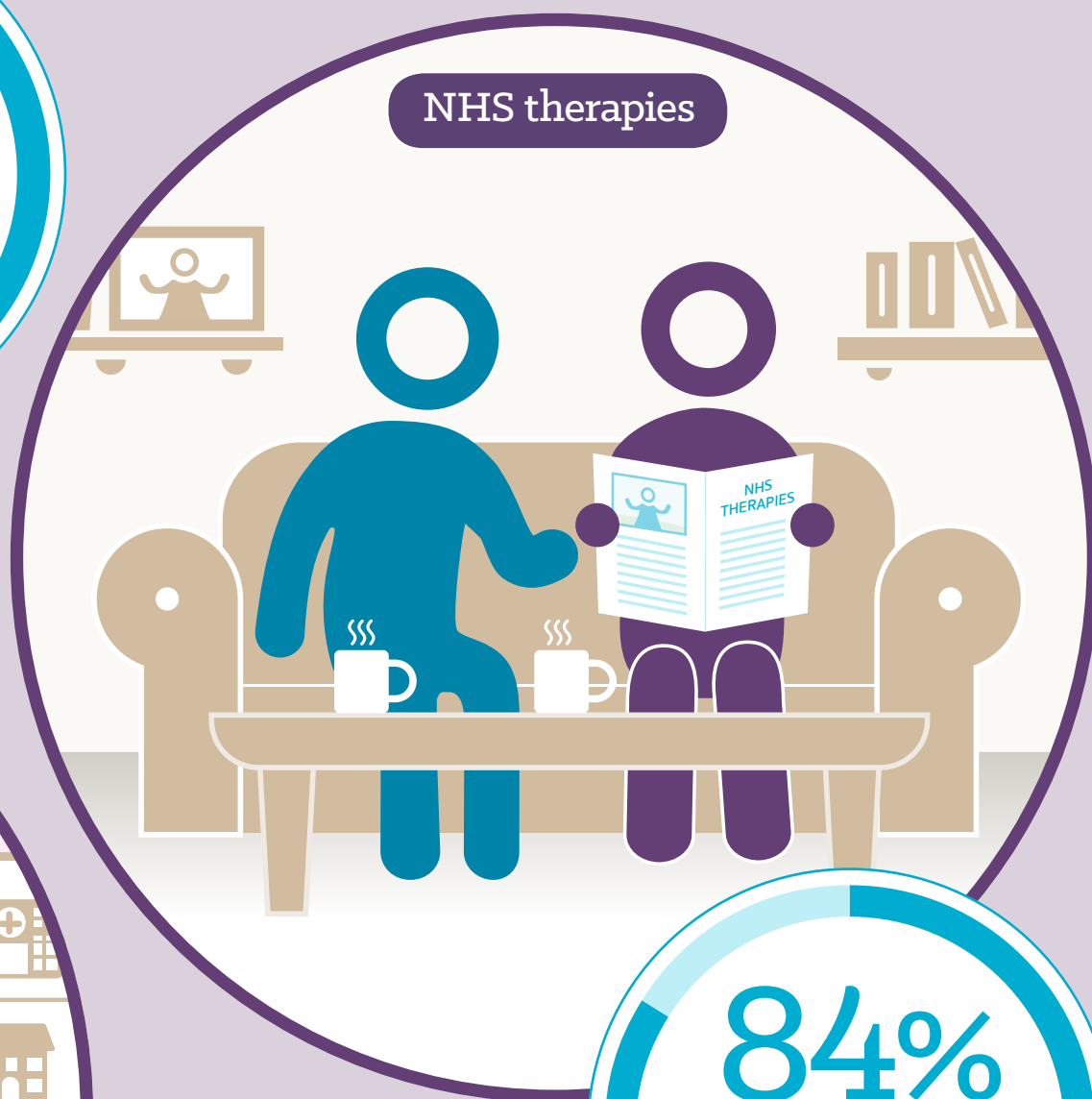
Health & social care workers



86%

felt that the person they saw understood how their mental health impacted on other areas of their life

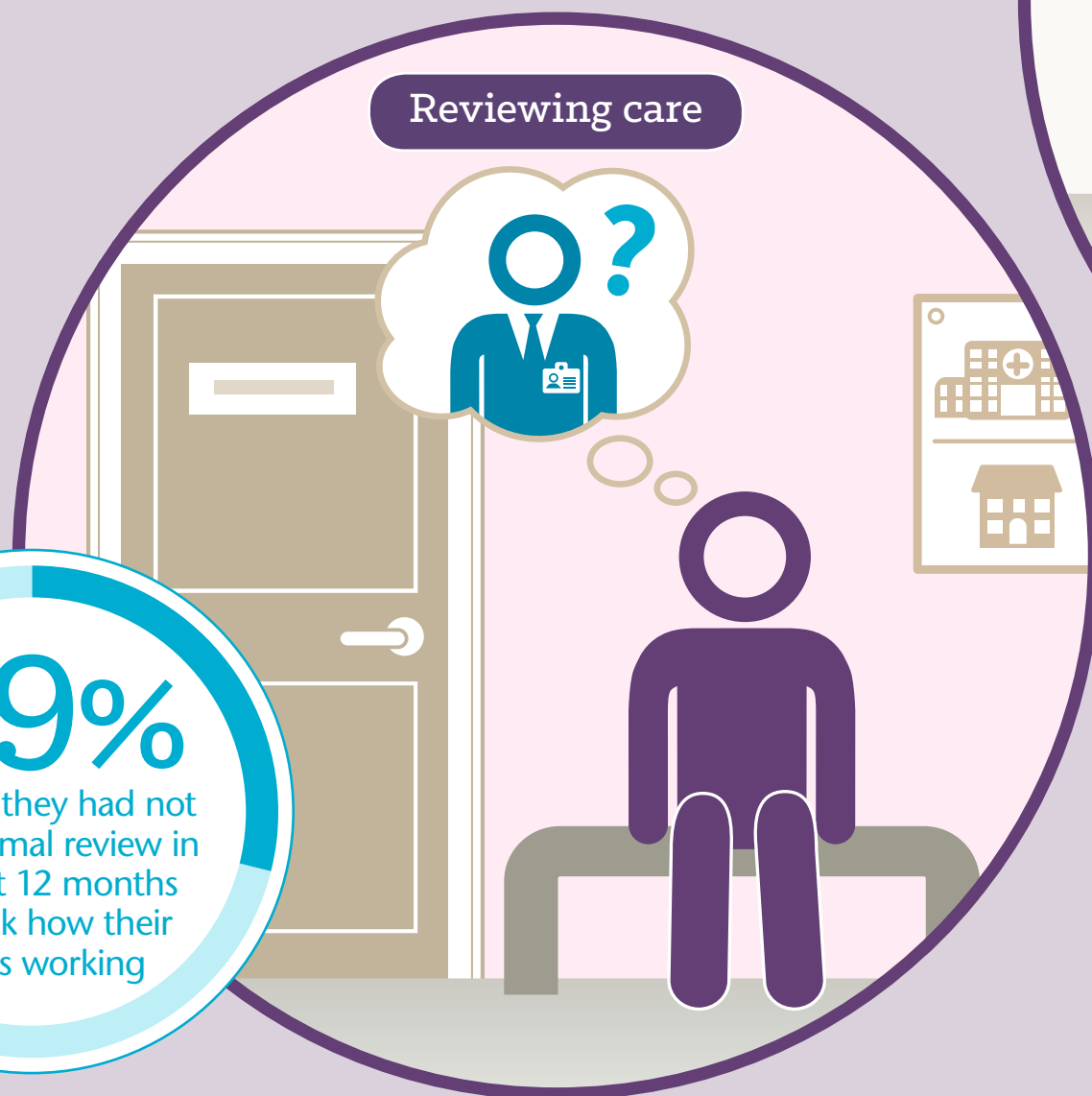
NHS therapies



84%

of those who had received therapies felt that this had helped them

Reviewing care



29%

said that they had not had a formal review in the past 12 months to check how their care is working

30%

had not received NHS therapies in the previous 12 months but would have liked this

The **highest quality** person centred care for all, **always.**

This survey was designed and coordinated by Picker for the Care Quality Commission (CQC). <https://www.cqc.org.uk/publications/surveys/community-mental-health-survey-2019>

 **Picker**