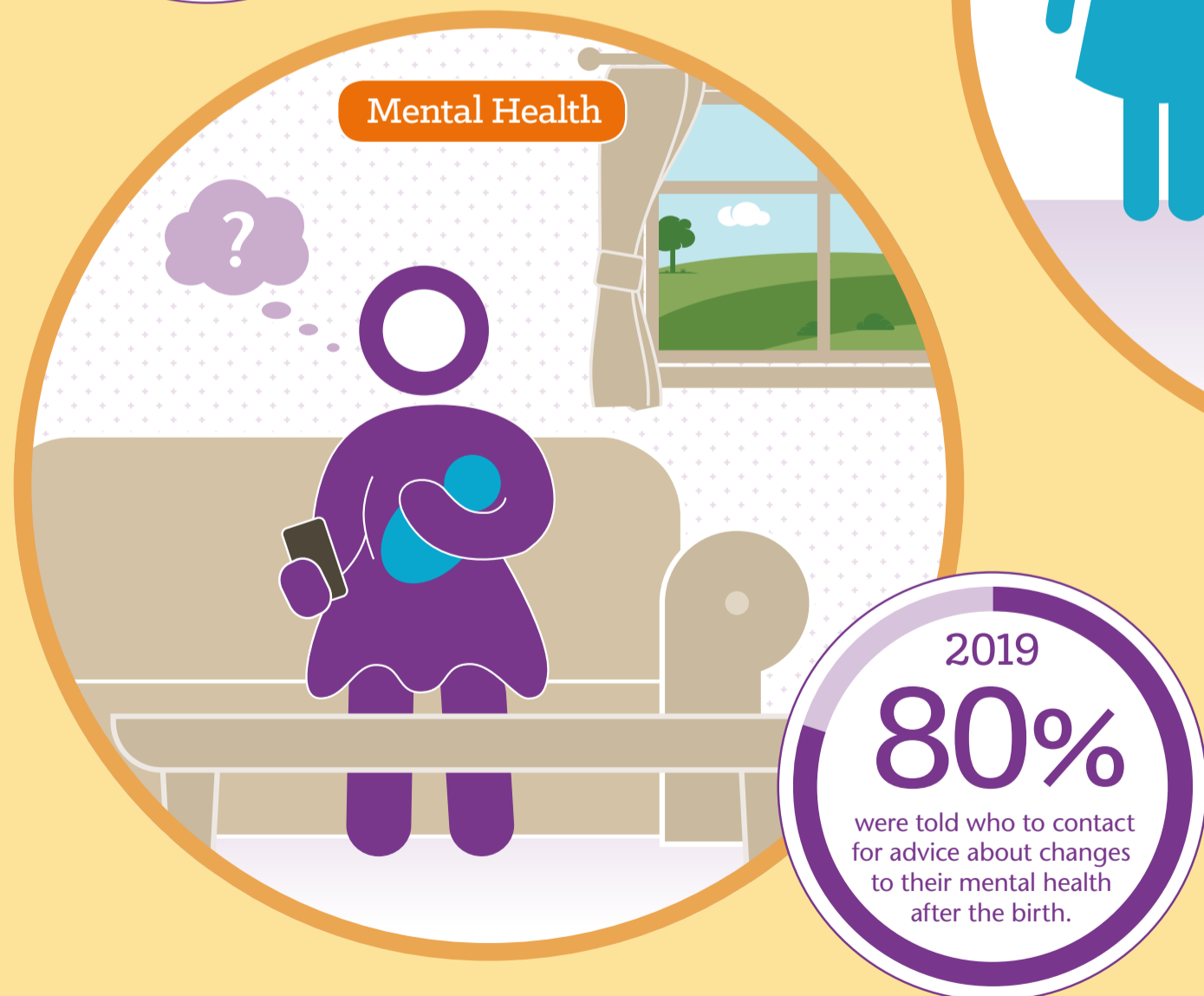
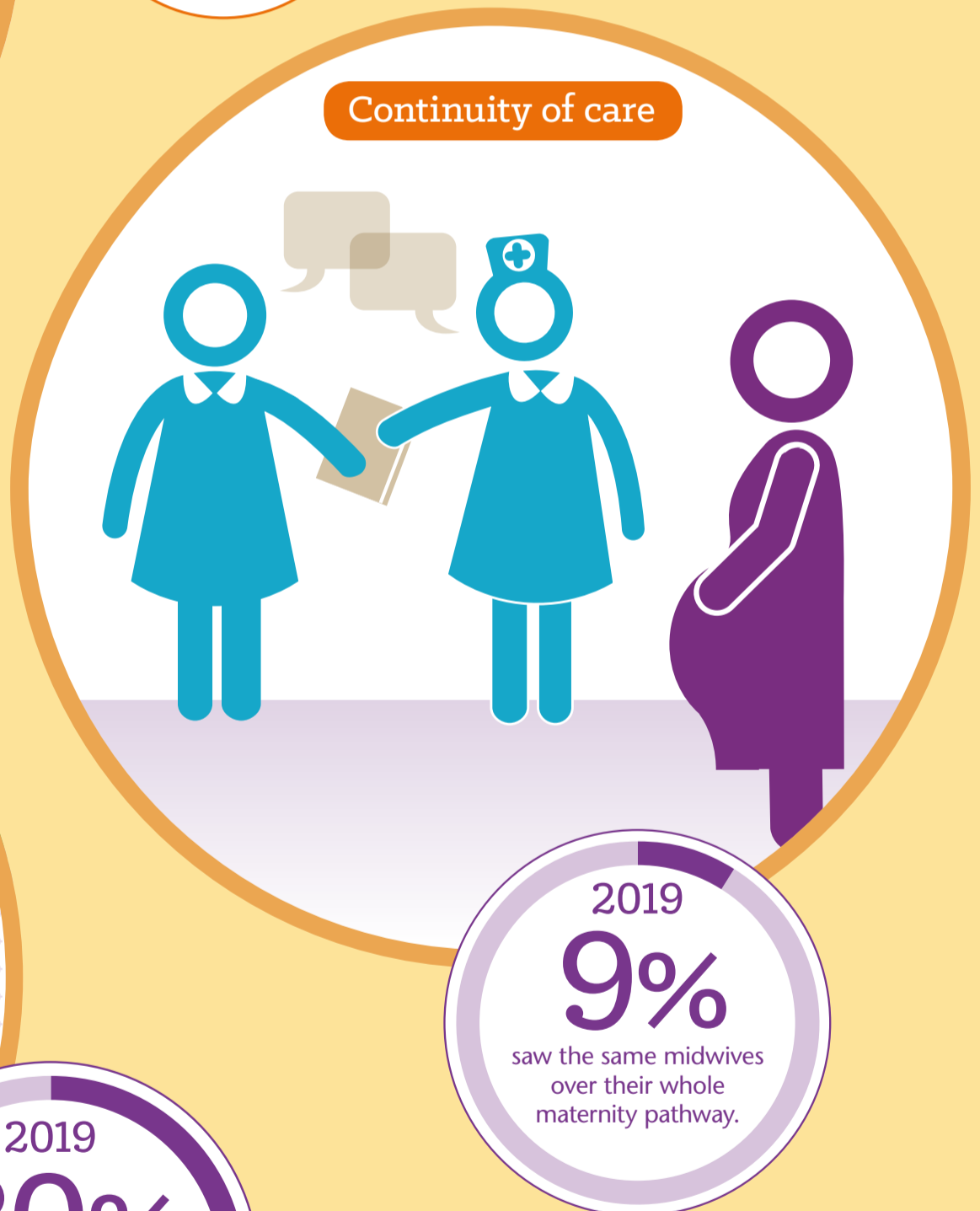
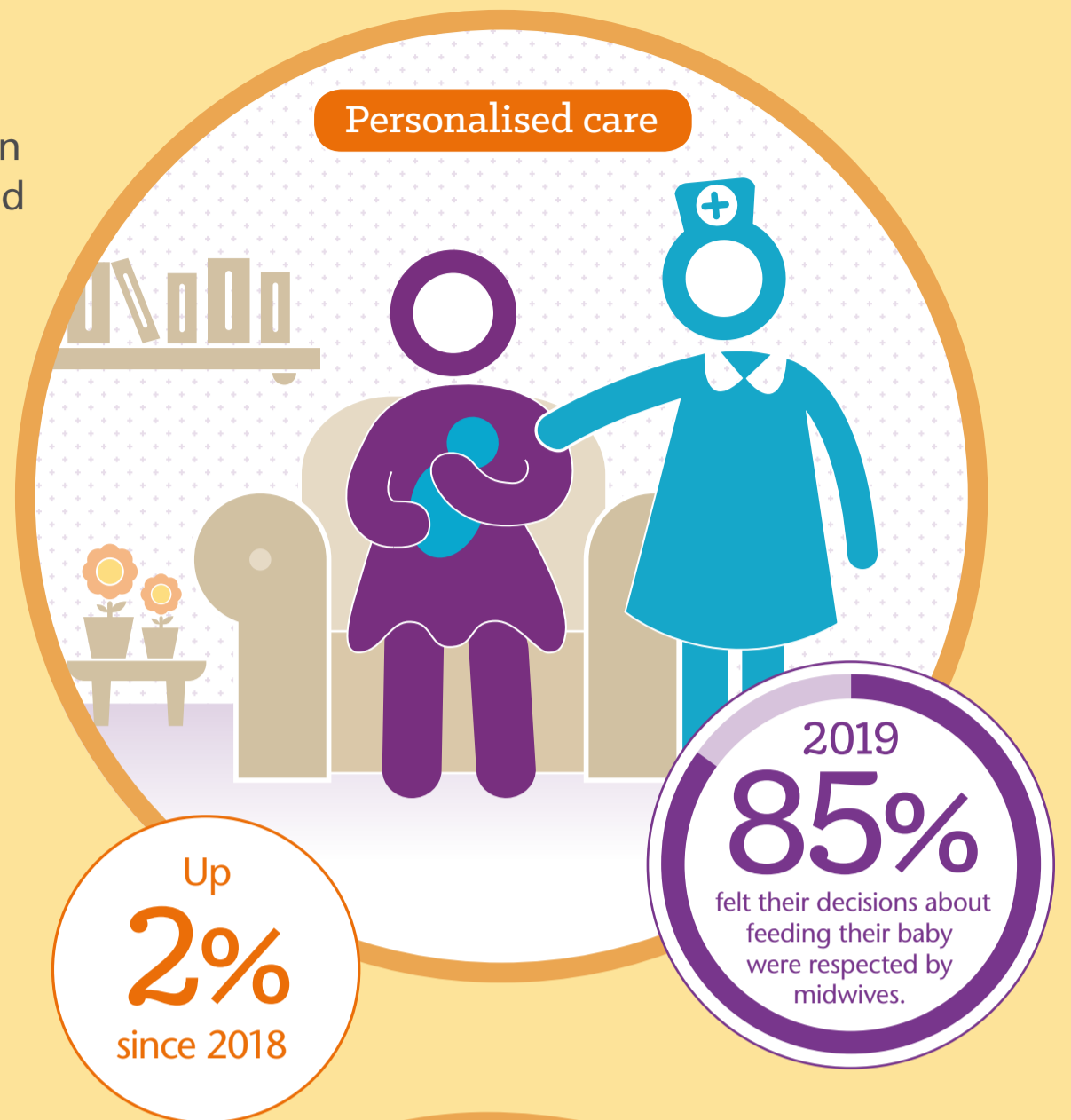
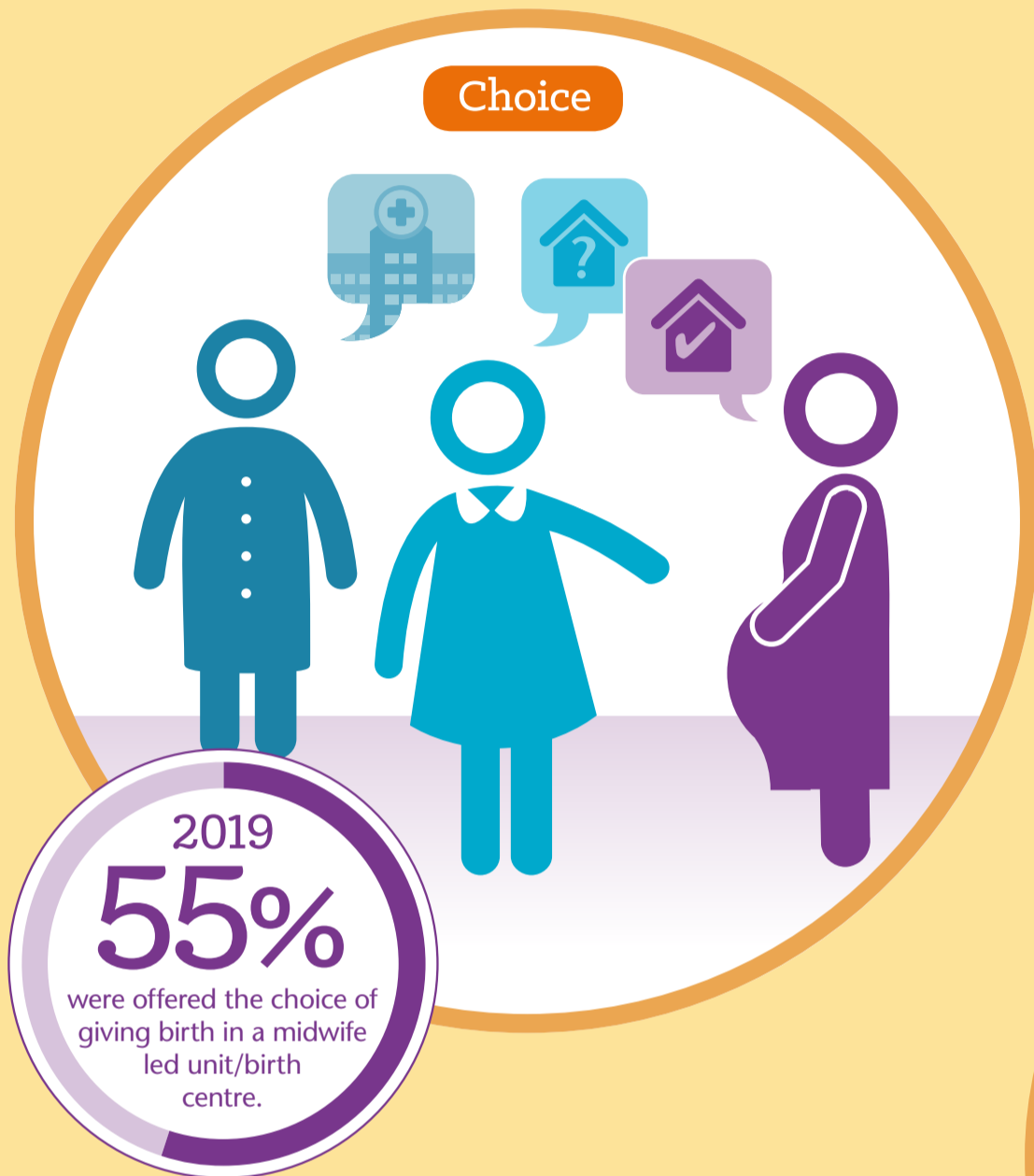


Maternity Survey 2019

The NHS Maternity Survey is the biggest source of data on people's experience of NHS maternity care in England, and in 2019 more than 17,000 women responded. The results suggest that some areas targeted by the NHS's recent Maternity Transformation Programme are showing signs of improvement, such as choice. However, other areas such as continuity of care still require further work.



The **highest quality** person centred care for all, **always**.

This survey was designed and coordinated by Picker for the Care Quality Commission: www.cqc.org.uk/maternitysury

 **Picker**